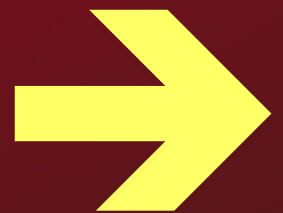


INLEAD

*No Graduate Left Behind*

ALIGNING ASPIRATIONS  
WITH OPPORTUNITY



## About Us

INLEAD, the Indian Institute of Learning & Advanced Development, is a premier Skills Development & Training Institution, aligning career aspirations of the youth with employment opportunities across emerging sectors such as Logistics, Cloud Computing, Healthcare Administration, Banking & Financial Services, etc. through programs approved by the National Skill Development Corporation in public-private partnership with Ministry of Skill Development & Entrepreneurship. The fast-paced Programs impart knowledge and experiential skills across key areas to help participants enhance their employability quotient and secure gainful employment in emerging industry sectors.

We have trained and placed more than 5,000 aspiring youth across 450+ national and international corporations by blending innovative curriculum design, experiential learning techniques and on-job-trainings to shape, develop & transform the youth into gainfully employable human capital.

Our Campus is strategically located in the heart of the Millennium City- Gurugram, which is home to more than 750 global corporations across industries, and the symbol of rising 'New India' epitomizing the youth aspirations of success.

### The INLEAD Campus

- 65,000 Sq. Ft. State-of-the-Art Campus
- Located In Millennium City - Gurugram
- 10-Minute Ride from HUDA Metro Station
- Experiential Learning Environment
- AV Classrooms; Library; IT Labs; Cafeteria
- Centrally Air-conditioned Facility



### Our Pedagogy

- Experiential Learning
- Competency Mapping
- Industry Excursions
- Professional Mentorship
- Industry Expert Seminars
- Sector Specialization
- On-the-Job Training
- Personality Development
- Skill Development

## Graduate Management Trainee Program (GMTP)

The Graduate Management Trainee Program (GMTP) is a specialized short-term certification designed in broad conformance to the National Skills Qualification Framework (NSQF) to make young students employable by bridging the gap between the learnings of school/ college education and the skill requirements of business corporations, nationally as well as across the world.

The Program focuses on developing management skills, imparting sector-specific technical knowledge and shaping the overall personality of the program participants to transform human resources into employable sector-specific human capital. The key to program success lies in the experiential learning techniques adopted to impart impactful training through industry expert lectures, role-playing workshops, and interactive training activities organized to accelerate the learning curve.

INLEAD, as the NSDC training partner for skill development programs across multiple sectors, leverages its association with Indian Corporations to impart meaningful skills training under NOSs approved by Sector Skill Councils and facilitates practical OJT/ Apprenticeships through a blended mode with a focus on learning outcomes.

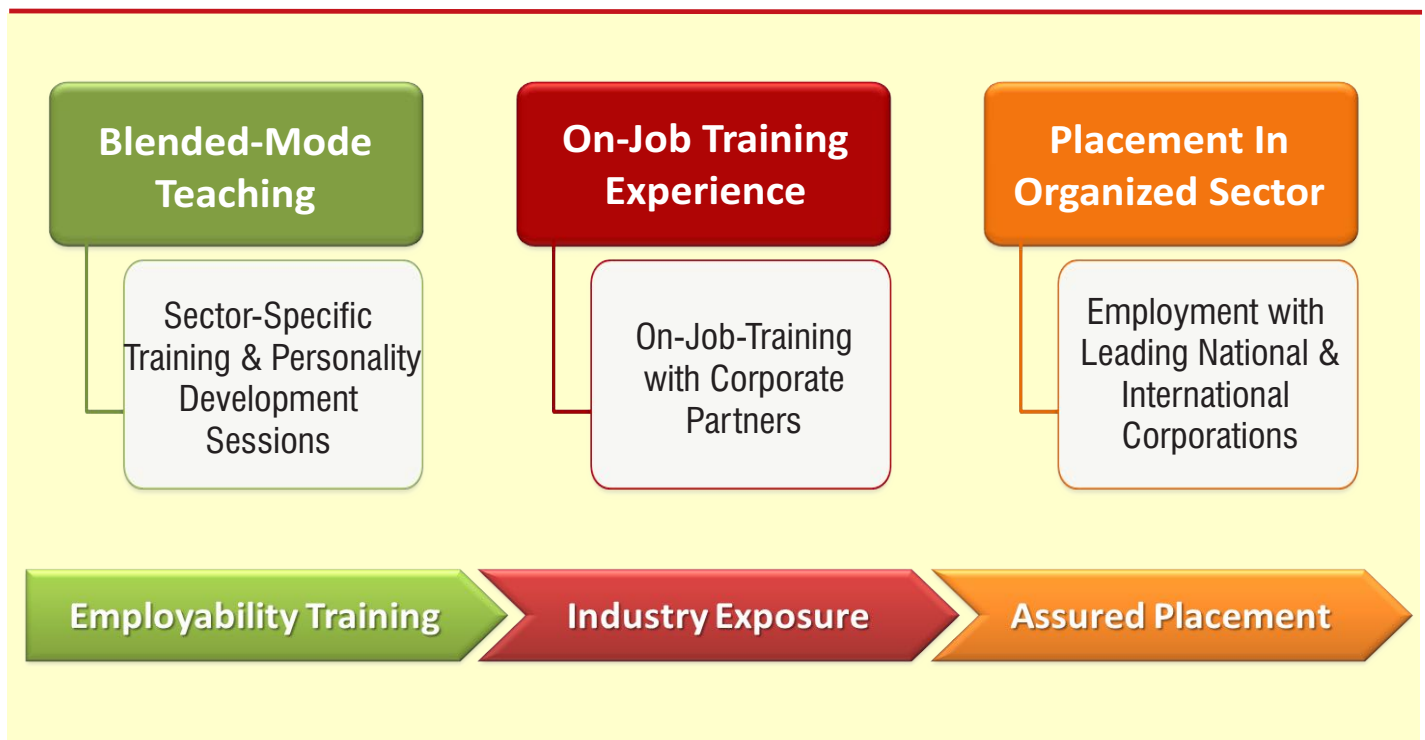
The uniqueness of the program lies in the experiential learning techniques adopted to impart training through industry expert lectures, role playing workshops, interactive training activities and apprenticeship organized to accelerate the learning curve by focusing on five essential skills:

- **Management Skills** for learning how to effectively plan, organize and coordinate available resources
- **Technical Skills** for learning the abilities needed to perform specific tasks for the role profile in the chosen sector
- **Soft Skills** for shaping personality by learning industry-specific behavioural requirements and communication etiquettes
- **Employability Skills** for integrating technical knowledge with soft-skills to become a market-ready professional
- **Application Skills** for experiential learning of sector-specific knowledge through OJT/ Apprenticeship to augment employability skills and develop expertise distinctive to a role-profile

## Program Structure

The Graduate Management Trainee Program consists of a blend of three-months of In-Class pedagogy, and three months' of Internship comprising of On-Job Training & e-Learning Modules followed by placement opportunities with leading national and international corporations.

The Program is delivered through a blended-mode of in-class pedagogy; industry workshops; on-line e-learning sessions; and mandatory OJT/ apprenticeship to help students establish themselves in employment and entrepreneurial ventures.





## Sector Specialization

Gainful employment and career growth require graduates to be equipped with the knowledge and skills specific to job-profile in an industry to compete in a highly dynamic and competitive employment market.

Acquiring role-specific knowledge and business skills through a guided *Graduate Management Trainee Program* is not only easy but also the fastest way to become employable and jumpstart a career.

The *Graduate Management Trainee Program* with Sectoral Specialization is woven around industry-specific professional skill-learning curriculum designed by the National Skill Development Corporation to assist program participants assimilate knowledge and skills for the chosen sector and ensure employment at the successful completion of the program.

INLEAD provides a unique opportunity to program participants through several industry sessions; employability assessments; and workshops, for exploring fitment across various sectoral specializations and taking an informed decision on the optimal career of their choice.

## Life Skills

In a constantly changing environment, having life skills is a basic part of being able to address the difficulties of regular day to day existence. The dramatic changes in global worldwide economies over the course of the recent five years have been coordinated with the change in innovation technology. All these are putting a greater impact on education, the working environment and at our home life. To succeed in professional life, sectoral knowledge and technical skills are not enough and the youth needs to learn life skills to cope with the increasing pace and change of present-day life, and to build the capacity to manage pressure and disappointment.

The *Graduate Management Trainee Program* not only works to impart sectoral knowledge but also places a strong emphasis on inculcating essential life skills among its program participants. the GMTP Program lays a strong foundation to build abilities for adaptive & positive behavior that enable the youth to deal with every life challenges & situations effectively by encouraging critical thinking; decision-making; problem-solving; communication; collaboration; time management; and a sense of responsibility towards society at large.

## GMTP in Business Management

### CAREER AVENUES

BUSINESS OPERATIONS

GENERAL ADMINISTRATION

CUSTOMER RELATIONS

PROCUREMENT & INVENTORY

### PROGRAM OVERVIEW

The Program equips the youth with skills for a career as an *Executive* in office operations/ customer relations management by developing management skills; imparting sectoral knowledge; developing personality & grooming; and improving communication skills to transform human resources into employable human capital across national markets and organizations with a global footprint.

### PROFESSIONAL LEARNINGS

Office Management

Information Systems Management

Customer Relationship

Asset Management

Health & Safety Compliances

Operational Coordination

Personality Development

Business Communications

**Application Eligibility:** Indian Nationals in the age-bracket of 18-25 years holding Class-12 Certification or above.





## GMTP in Banking & Financial Services

### CAREER AVENUES

LOAN PROCESSING

CASA OPERATIONS

CUSTOMER CARE

DATA PROCESSING

### PROGRAM OVERVIEW

The Program equips the youth with skills for a career as an *Executive* in banking operations & financial services management by developing resource management skills; imparting sectoral knowledge; developing personality & grooming; and improving communication skills to transform human resources into employable human capital across national markets and organizations with a global footprint.

### PROFESSIONAL LEARNINGS

Banking Products	Microfinance
Banking Processes & Transactions	Loan Processing
Regulatory Compliance	SME & Retail Customer Relations
Personality Development	Business Communications

**Application Eligibility:** Indian Nationals in age-bracket of 21-25 years holding Graduate Degree in any stream.



## GMTP in Logistics & Warehouse Management

### CAREER AVENUES

TRANSPORTATION

SUPPLY CHAIN

LOGISTIC OPERATIONS

WAREHOUSE & INVENTORY

### PROGRAM OVERVIEW

The Program equips the youth with skills for a career as an *Executive* in logistics & warehouse operations/management by developing resource management skills; imparting sectoral knowledge; developing personality & grooming; and improving communication skills to transform human resources into employable human capital across national markets and organizations with a global footprint.

### PROFESSIONAL LEARNINGS

Transportation Management	Inventory & Asset MIS Management
Customer Relationship	Logistics Management
Health & Safety Compliances	Supply Chain Coordination
Personality Development	Business Communications

**Application Eligibility:** Indian Nationals in the age-bracket of 18-25 years holding Class-12 Certification or above.



## GMTP in Events Management



### CAREER AVENUES

EVENT PLANNER

ENTERTAINMENT  
COORDINATOR

WEDDING PLANNER

CONFERENCE  
ORGANISER

### PROGRAM OVERVIEW

The Program equips the youth with skills for a career as a *Planner* in planning and organizing 'Events, Conferences & Exhibitions' by understanding the national & international events industry landscape; imbibing key concepts of events planning, coordination & management; developing cost-analysis skills; imparting artist & stage management knowledge; and improving communication skills for gainful employment in this sector.

### PROFESSIONAL LEARNINGS

Event Planning & Concepts

Campaign Planning

Venue Operations

Events Production & Logistics

Events Marketing Management

Stage Craft & Design

Personality Development

Business Communications

**Application Eligibility:** Indian Nationals in age-bracket of 21-25 years holding Graduate Degree in any stream.

## GMTP in Healthcare Administration

### CAREER AVENUES

PATIENT RELATIONS

HEALTHCARE OPERATIONS

REGISTRATION / BILLING

FLOOR MANAGEMENT

### PROGRAM OVERVIEW

The Program equips the youth with skills for a career as an *Executive* in non-clinical healthcare operations patient services management by developing resource management skills; imparting sectoral knowledge; developing personality & grooming; and improving communication skills to transform human resources into employable human capital across national markets and organizations with a global footprint.

### PROFESSIONAL LEARNINGS

Patient & Visitor Counseling

CRM Data Management

Patient Records Management

Hospital Front Desk & Billing

Health & Safety Compliances

Relationship Management

Personality Development

Business Communications

**Application Eligibility:** Indian Nationals in the age-bracket of 18-25 years holding Class-12 Certification or above.





## GMTP in Digital Marketing

### CAREER AVENUES

DIGITAL MEDIA /  
SEO SPECIALIST

BUSINESS /  
MARKETING STRATEGY

SOCIAL MEDIA OPTIMIZER /  
SPECIALIST

ONLINE MARKETING /  
BLOGGING

### PROGRAM OVERVIEW

The Program equips the youth with skills for a career as a *Specialist* in digital marketing/ social media management by developing marketing management skills; imparting digital platform delivery knowledge; developing relationship management attributes; and improving communication skills to transform human resources into employable human capital across national markets and organizations with a global footprint.

### PROFESSIONAL LEARNINGS

Keyword Research & Analysis Skills	Digital Marketing Techniques
Search Engine Optimization	Digital Media Budgeting
Social Media Management	Campaign Tracking
Personality Development	Business Communications

**Application Eligibility:** Indian Nationals in the age-bracket of 18-25 years holding Class-12 Certification or above.



## GMTP in E-Commerce Management

### CAREER AVENUES

CATALOGUE DESIGN

SUPPLY CHAIN

CATEGORY MANAGEMENT

WAREHOUSE & INVENTORY

### PROGRAM OVERVIEW

The Program equips the youth with skills for a career as an *Executive* in E-Commerce operations/ management by developing resource management skills; imparting sectoral knowledge; developing personality & grooming; and improving communication skills to transform human resources into employable human capital across national markets and organizations with a global footprint.

### PROFESSIONAL LEARNINGS

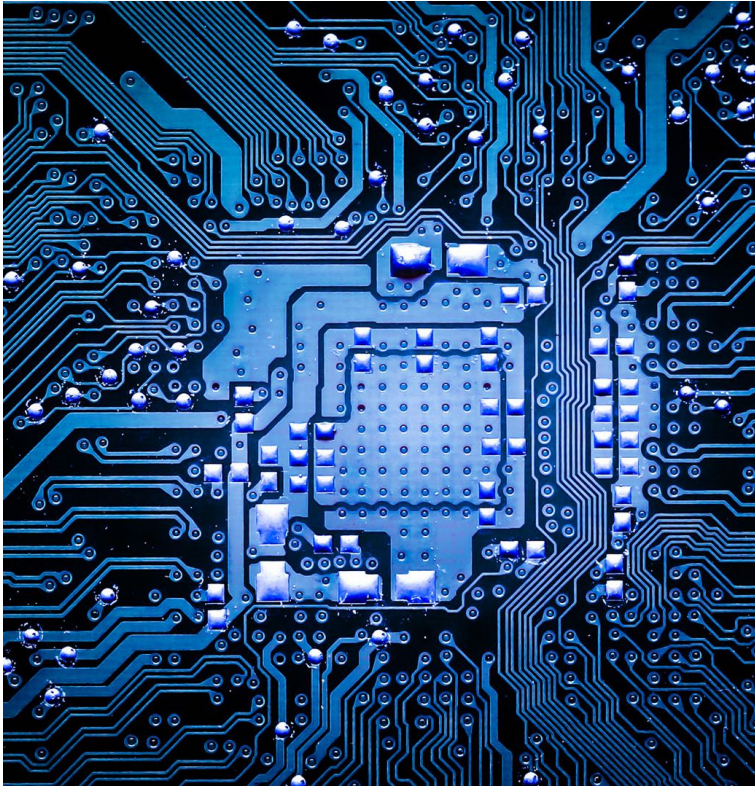
Sales & Return Analysis	Inventory & Asset MIS Management
Order Processing & Fulfillment	Logistics Management
Demand Forecast	Supply Chain Coordination
Personality Development	Business Communications

**Application Eligibility:** Indian Nationals in age-bracket of 21-25 years holding Graduate Degree in any stream.





## GMTP in IT Infrastructure Management



### CAREER AVENUES

TECHNICAL SUPPORT

SYSTEM ADMINISTRATION

NETWORK ADMINISTRATION

INFRASTRUCTURE  
MAINTENANCE

### PROGRAM OVERVIEW

The Program equips the youth with skills for a career as a *Specialist* in IT technical support/ network administration by developing IT infrastructure management skills; imparting computer systems maintenance knowledge; developing client management attributes; and improving communication skills to transform human resources into employable human capital across national markets and organizations with a global footprint.

### PROFESSIONAL LEARNINGS

OS & Application Configuration

Network Configuration

Remote Systems Management

Network Management

Service Request Management

Hardware Troubleshooting

Personality Development

Business Communications

**Application Eligibility:** Indian Nationals in the age-bracket of 18-25 years holding Class-12 Certification / ITI Diploma or above.

## GMTP in Cloud Computing

### CAREER AVENUES

CLOUD MANAGEMENT

ENTERPRISE CLOUD  
ARCHITECT

HIGH PERFORMANCE  
COMPUTING

CLOUD COMPUTING  
VISUALIZER

### PROGRAM OVERVIEW

The Program equips the youth with skills for a career as a Specialist in cloud computing application development and systems management by developing design skills; imparting cloud computing knowledge; developing client management attributes; and improving communication skills to transform human resources into employable human capital across national markets and organizations with a global footprint.

### PROFESSIONAL LEARNINGS

Cloud Deployment Service Models

Legacy Application Migration

Cloud Native & Cloud First Apps

App Performance Monitoring

Data & Application Security

Application Scalability

Personality Development

Business Communications

**Application Eligibility:** Indian Nationals in age-bracket of 21-25 years holding Graduate Degree (Engineering/Technology/Maths/CS).





## GMTP in AI & BIG Data Analytics

### CAREER AVENUES

BUSINESS/DATA ANALYST

MIS CONSULTANT

BIG DATA ENGINEER

DATA MODELER/VISUALIZER

### PROGRAM OVERVIEW

The Program equips the youth with skills for a career as an *Analyst* in business data management, responsible for pre-processing data & data quality management, by developing data handling skills; imparting sectoral knowledge; developing personality & grooming; and improving communication skills to transform human resources into employable human capital across national markets and organizations with a global footprint.

### PROFESSIONAL LEARNINGS

AI & Big Data Use Case Analysis	Information Systems Management
Statistical Concepts	Data Modeling
Data Import & Pre-Processing	Data Transformation
Personality Development	Business Communications

**Application Eligibility:** Indian Nationals in age-bracket of 21-25 years holding Graduate Degree (Engineering/Technology/Maths/CS).



## GMTP in Internet of Things

### CAREER AVENUES

IoT DEVELOPMENT

CONTROL ROOM OPERATIONS

EMBEDDED SOLUTIONS ENGINEER

SMART SOLUTIONS ARCHITECT

### PROGRAM OVERVIEW

The Program equips the youth with skills for a career as a *Specialist* in developing and maintaining 'Internet Of Things' applications and control systems by understanding opportunities for remote control; developing application design skills; imparting command control knowledge; and improving communication skills to transform human resources into employable human capital.

### PROFESSIONAL LEARNINGS

Evolution of IoT & Social Impact	Control Application Development
Security & Privacy Risks	Data Risks Management
Remote Operations Management	'Over-the-Air' Patch Management
Personality Development	Business Communications

**Application Eligibility:** Indian Nationals in age-bracket of 21-25 years holding Graduate Degree (Engineering/Technology/Maths/CS).





**Skill India**  
कौशल भारत - कुशल भारत



N · S · D · C

National  
Skill Development  
Corporation

**Transforming the skill landscape**  
approved training partner

## Application Process

**Application Submission:** Eligible aspirants applying for admission to INLEAD's Graduate Management Trainee Program with Sector Specializations may submit their Application Form online at [www.inlead.in](http://www.inlead.in) or send the duly completed Application Form to the following address:

GMTP Program Admissions, INLEAD

National Expressway-48 81-P Sector-34 Gurugram - 122004 Haryana.

It is important for applicants to fill in the Form correctly and to give all requisite details. Incomplete, inadequate or inaccurate filing of the Application Form may entail elimination from the selection process.

**Program Fee:** INR 150,000 for Graduate Management Trainee Program delivered through blended model of e-Learnings and In-Class Pedagogy followed by Internship. Program Fee is **Inclusive** of Uniform, Boarding & Lodging Expenses (Terms & Conditions Apply)

## Program Highlights

### 100% OJT/ Apprenticeship and Placement Support

Extensive network of 500+ corporations across a wide spectrum of business verticals to provide industry exposure

### NSDC Approved Program

Government recognized National Skill Development Corporation Level - 4/5/6/7 Certifications (as applicable)

### Personality Development

Development of overall personality, communication skill and grooming as integral components

### Promising Career Path

Rewarding career in leading organizations from the fastest growing industries and business sectors

**500+**  
Placement Partners

Attractive  
**Salary**  
Packages

**100%**  
Assured Placement



## The INLEAD Edge

The Indian Institute of Learning & Advanced Development provides a distinct advantage of world-class Campus, blended learning modules, integrated on-job-training/ apprenticeship for industry exposure, and assured placement on successful completion of the Program through its vast network of National and Multi-National corporations.

### Top Employers



### Success Stories



# INLEAD

*No Graduate Left Behind*



**N · S · D · C**

**National  
Skill Development  
Corporation**

**Transforming the skill landscape**

© Copyright 2022-23 Primordial Systems P. Ltd.